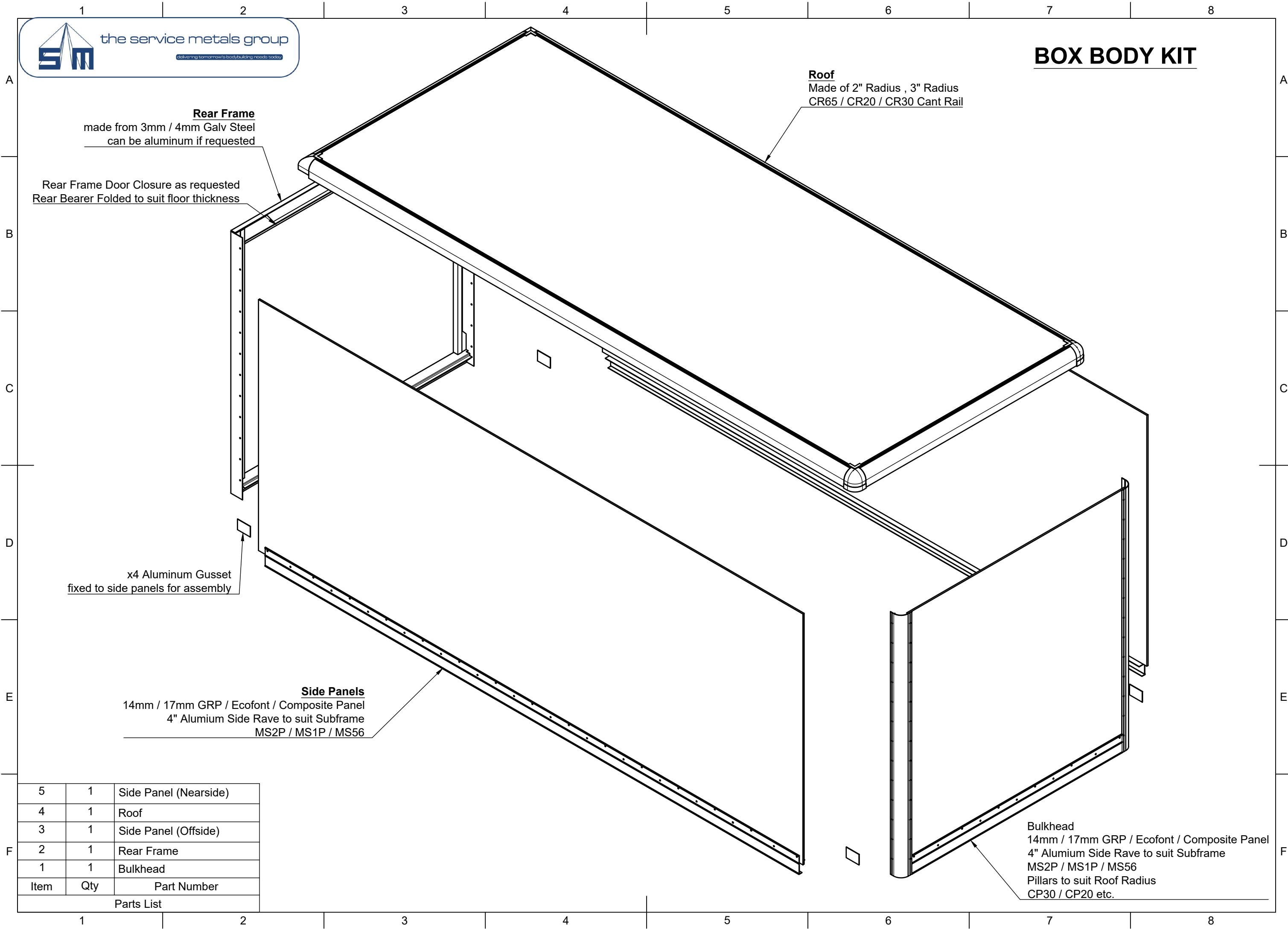


# BOX BODY KIT



**Rear Frame**  
 made from 3mm / 4mm Galv Steel  
 can be aluminum if requested

Rear Frame Door Closure as requested  
 Rear Bearer Folded to suit floor thickness

**Roof**  
 Made of 2" Radius , 3" Radius  
 CR65 / CR20 / CR30 Cant Rail

x4 Aluminum Gusset  
 fixed to side panels for assembly

**Side Panels**  
 14mm / 17mm GRP / Ecofont / Composite Panel  
 4" Alumium Side Rave to suit Subframe  
 MS2P / MS1P / MS56

**Bulkhead**  
 14mm / 17mm GRP / Ecofont / Composite Panel  
 4" Alumium Side Rave to suit Subframe  
 MS2P / MS1P / MS56  
 Pillars to suit Roof Radius  
 CP30 / CP20 etc.

5	1	Side Panel (Nearside)
4	1	Roof
3	1	Side Panel (Offside)
2	1	Rear Frame
1	1	Bulkhead
Item	Qty	Part Number
Parts List		