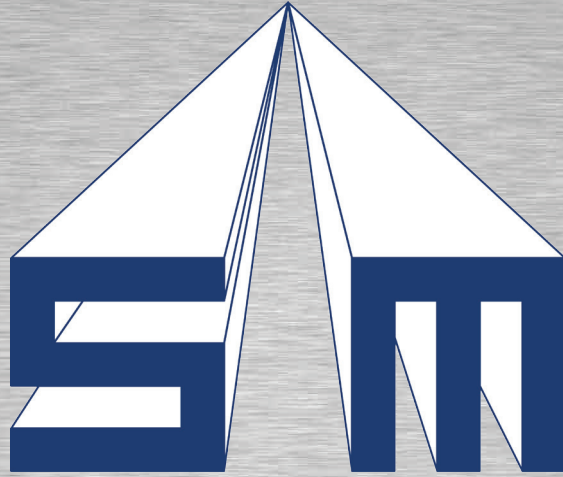
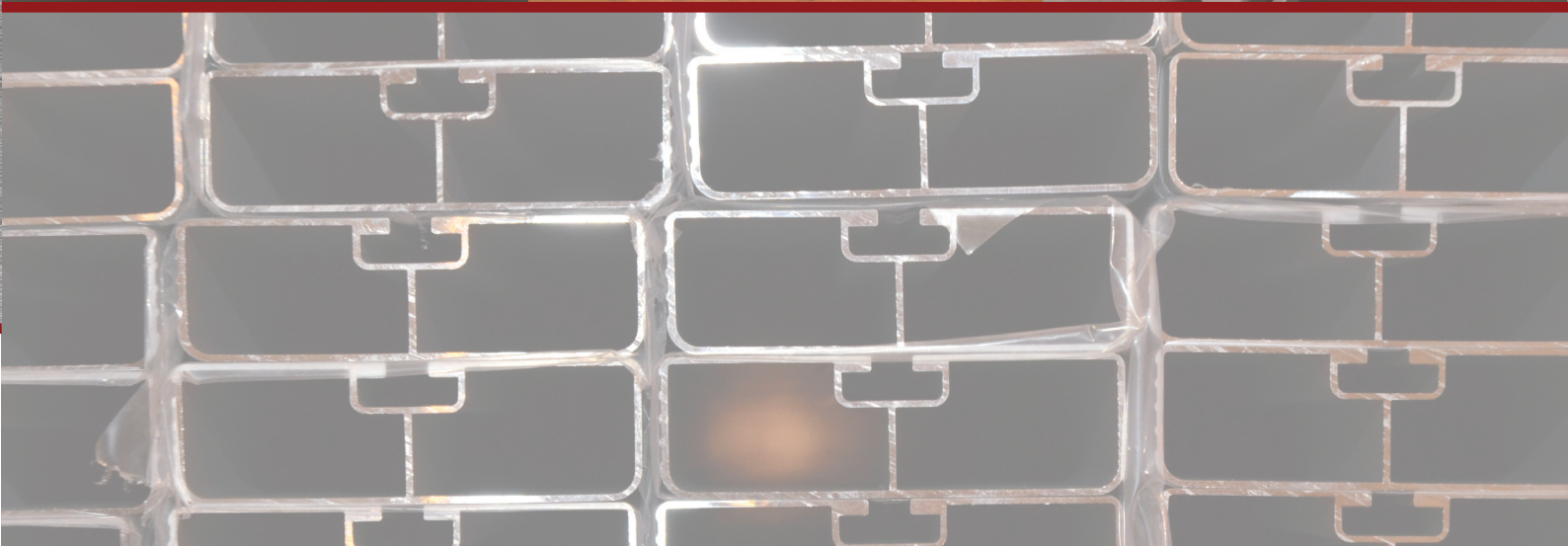
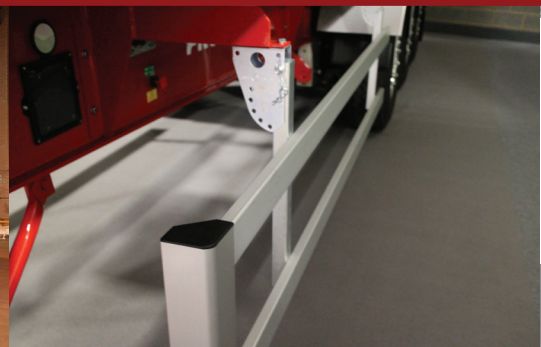
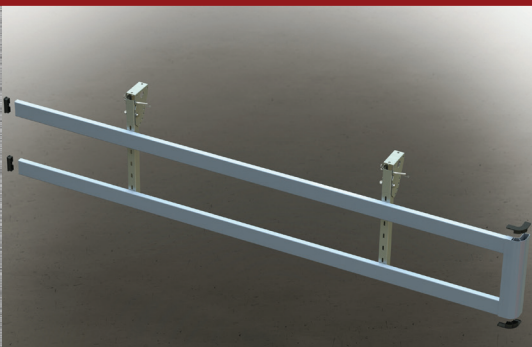


SERVICE METALS



TYPE APPROVED SIDE GUARD SYSTEMS



WWW.SERVICEMETALS.CO.UK



SERVICE METALS

CONTENTS

Kits Selection Table	2
Legs, Braces and Chassis Arms	3
Rails and Corner Pillars	4
Kits for Standard Configuration Vehicles	5
Kits for Specialist Vehicles	6

The Service Metals Group now believe that they can offer their customers the most comprehensive range of Type Approved Side Guard Systems in Europe. After extensive research and feedback from our customers we have added some additional systems to complement our existing range and now offer a solution for most, if not all, applications.

All our vehicle Side Guard Kits are tested and approved by the Vehicle Certification Agency to ensure they meet all UK and EU legislation and guarantee a level of safety and compliance for your vehicles.

If you have any queries about our Side Guard Kits please do not hesitate to contact your local Service Metals branch where a dedicated member of our sales team will be happy to advise.

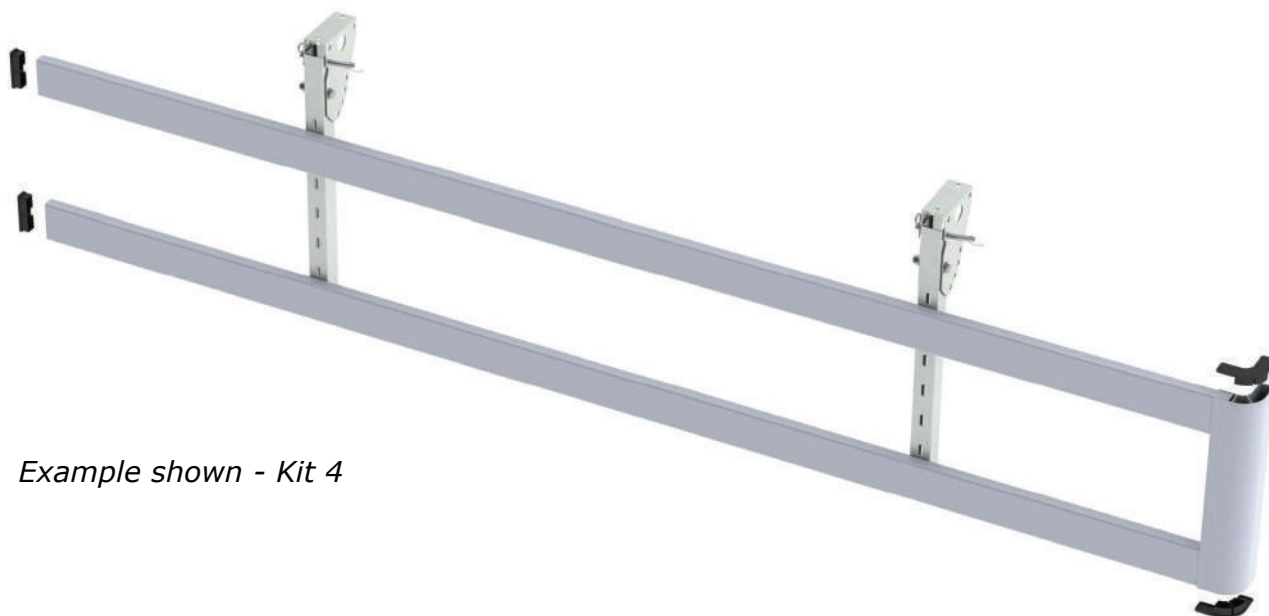
Full VCA Type Approval documents and kit fitting instructions are available on our website.

Please Note:

1. Over the years various Aluminium Stockists have followed our numbering system for Road Transport Sections, but have not always copied our shapes exactly. To avoid errors, please always refer to our catalogue when ordering to our numbers.
2. Service Metals reserves the right to modify the specification and forms of the extrusions illustrated in this catalogue. Whilst all possible care has been taken to ensure the information illustrated is as accurate as possible, discrepancies may occur.
3. All weights shown in this catalogue are for guidance use only. They are calculated using nominal dimensions and scientifically proven densities. Please note, weights may vary in reality from shown weights due to manufacturing and material variances.

KIT SELECTION TABLE

Kit No.	Leg	Corner Pillar	Rail	Chassis Brace	Chassis Arm	Max Drop	Max Leg Spacing	Max Front Overhang	Max Rear Overhang
						mm	mm	mm	mm
1	TK3017	CP53/CP54	SG5A/50	-	-	434	2100	600	250
2	SGMK5	CP53/CP54	SG5A/50	-	-	575	2100	600	250
3	SGMK5	SG4CP	SG4	-	-	705	2700	600	300
4 (Config. 1)	SGMK5	CP53/CP54	SG5A	-	-	682	2700	600	250
4 (Config. 2)	SGMK5	CP53/CP54	SG5A	-	-	750	2000	750	250
5	TK3017	SG4CP	SG4	-	-	556	2700	600	250
6	TK3017	CP53/CP54	SG5A	-	-	572	2700	600	250
7	PWL950G	SG4CP	SG4	-	-	950	2700	600	350
8	SGMK5	CP53/CP54	SG5A	SMG1	-	1260	2700	600	200
9	TK3054	CP53/CP54	SG5A	-	-	575	2700	600	250
10	TK3054	TK1040	TK1010	-	-	575	2700	600	250
11	SGMK5	TK1040	TK1010	-	-	680	2700	600	250
12	TK3017	TK1040	TK1010	-	-	530	2700	600	250
13	TK3054	SG4CP	SG4	-	-	600	2700	635	250
14	TK3017	CP53/CP54	SG5A	-	32408	600	2700	600	250
15	SGMK5	CP53/CP54	SG5A	-	32406	592	1700	700	250
16	SGMK5	CP53/CP54	SG5A	-	32407	700	1700	700	250

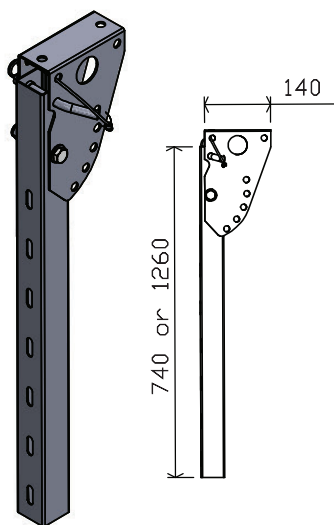


Example shown - Kit 4



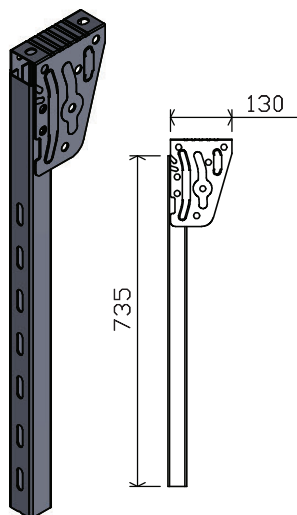
- All the above Side Guard Kits have been Type Approved by the Vehicle Certification Agency to provide a level of safety and performance for the user and to guarantee they meet all relevant legislation.
- Kits have to be used with the correct components stated and within the constraints shown above.
- Full range of differing kits are available in order to fulfil all your criteria and to suit a range of vehicle types and sizes.
- Full VCA Type Approval documents are available on our website.
- Contact your local Service Metals branch if you require any further information regarding our Side Guard Kits and products.

SIDE GUARD LEGS AND BRACES



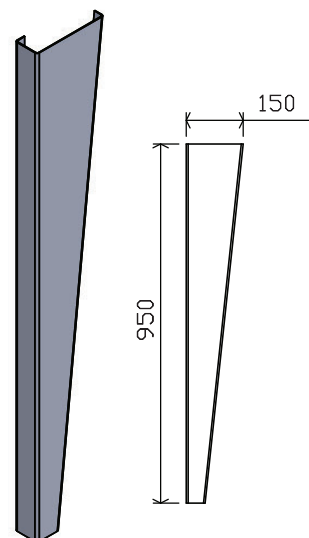
SGMK5

Galvanised Steel/Zinc
Plated/Stainless Steel Leg
740mm or 1260mm drop



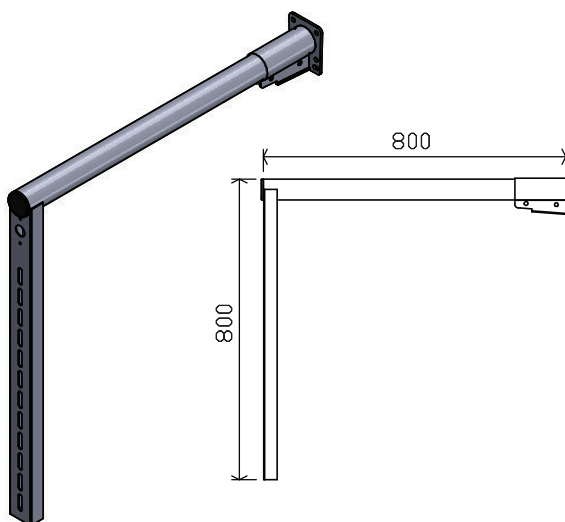
TK3017

Galvanised Steel/Zinc
Plated/Stainless Steel Leg
735mm drop



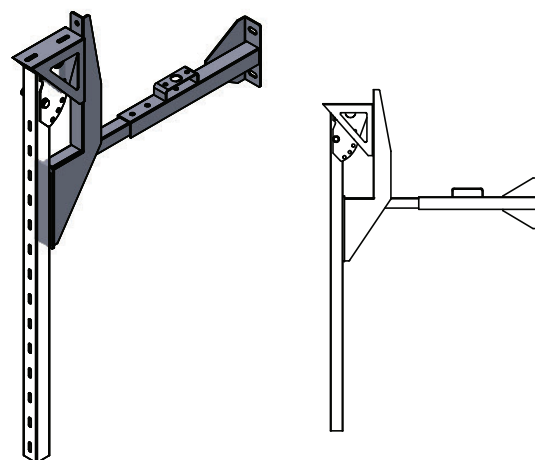
PWL950G

Galvanised Steel
950mm drop



TK3054

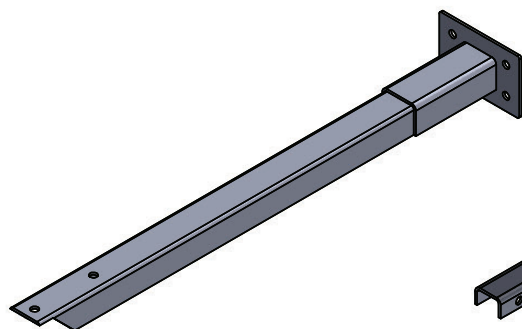
Zinc plated steel leg
800mm drop



SMG1

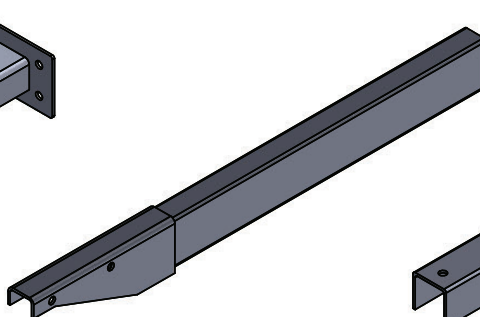
Galvanised Steel adjustable brace for use
with SGMK5 leg
Made to bespoke dimensions

SIDE GUARD CHASSIS ARMS



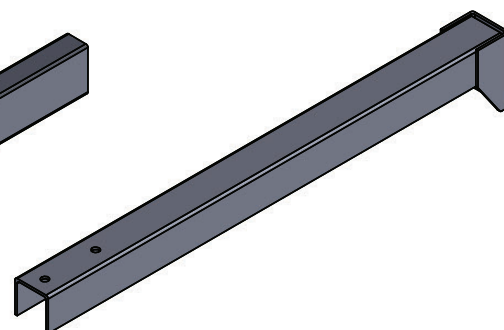
32406

850mm Arm
Black Powder Coated Steel



32407

850mm Arm
Mill Finish Steel

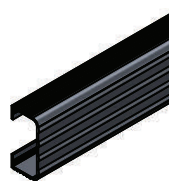
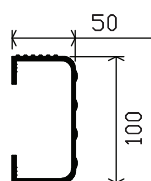


32408

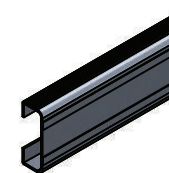
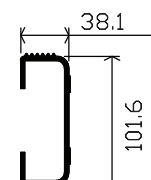
850mm Arm
Black Powder Coated Steel

SIDE GUARD RAILS

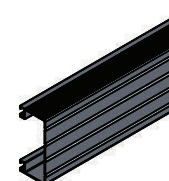
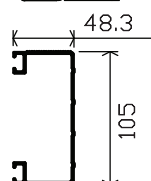
SG1
1.89kg/m



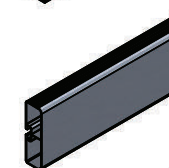
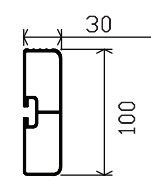
SG2
1.94kg/m



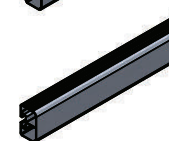
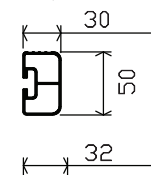
SG4
1.43kg/m



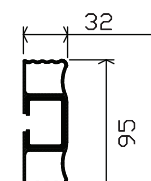
SG5A
1.22kg/m



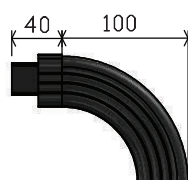
SG5/50
0.81kg/m



TK1010
Galvanised Steel Inner
Low Density Polymer Outer



SIDE GUARD CORNER PILLARS

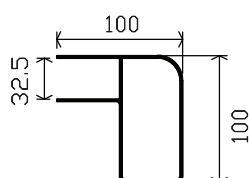
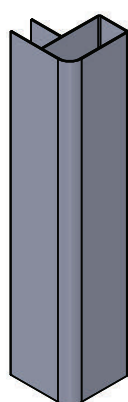


TK1025

100mm plastic pillar for single rail kits

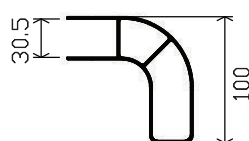
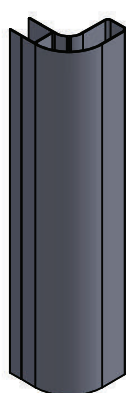
TK1040

500mm plastic pillar for double rail kits



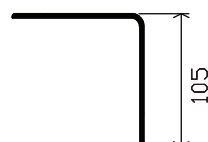
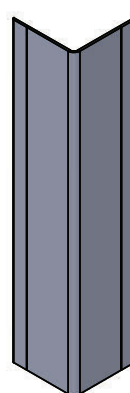
CP54

For use with SG5A or SG5/50 rail systems



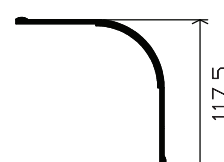
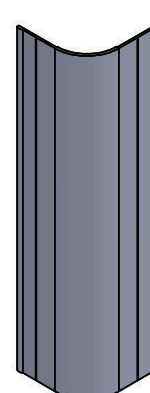
CP53

For use with SG5A or SG5/50 rail systems



SG4CP

For use with and single or double rail systems



CP52

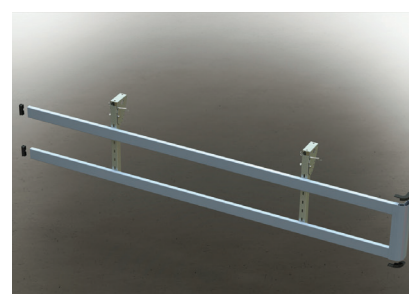
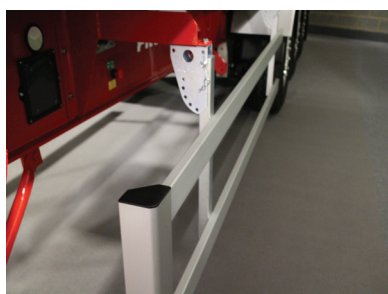
For use with and single or double rail systems

KITS FOR STANDARD CONFIGURATION VEHICLES

- Kits for Trailers, Box Bodies, Curtainsiders, Dropsides and Rigid bodied vehicle.
- Fulfils the requirements of the majority of our Side Guard Kit customers.
- Specialist Side Guard Kits are also available.

Our Standard Configuration Kits

The most popular kit in our range is the Kit 4 configuration. It consists of the SGMK5 leg, SG5A rail and either corner pillar CP53A or CP54 included in the kit. There are 2 configurations of Kit 4 to maximize the versatility of the application. Other variations of this kit are available in the table below. There are a range of legs, rails and pillars available in order to produce a specific application or look for your vehicle. All our standard configuration kits are designed to lift up to allow easy access to the underneath of the vehicle



Kit No.	Leg	Corner Pillar	Rail	Chassis Brace	Chassis Arm	Max Drop	Max Leg Spacing	Max Front Overhang	Max Rear Overhang
						mm	mm	mm	mm
1	TK3017	CP53/CP54	SG5A/50	-	-	434	2100	600	250
2	SGMK5	CP53/CP54	SG5A/50	-	-	575	2100	600	250
3	SGMK5	SG4CP	SG4	-	-	705	2700	600	300
4 (Config. 1)	SGMK5	CP53/CP54	SG5A	-	-	682	2700	600	250
4 (Config. 2)	SGMK5	CP53/CP54	SG5A	-	-	750	2000	750	250
5	TK3017	SG4CP	SG4	-	-	556	2700	600	250
6	TK3017	CP53/CP54	SG5A	-	-	572	2700	600	250
11	SGMK5	TK1040	TK1010	-	-	680	2700	600	250
12	TK3017	TK1040	TK1010	-	-	530	2700	600	250

Alternatively



- Our kits are available in both single and double rail configuration
- For smaller chassis vehicles our SG5/50 rail can be used with kits 1 or 2 in lieu of the standard SG5 rail

KITS FOR SPECIALIST VEHICLES

- Relevant to specialist vehicle chassis; Tankers, Tippers, Cement Mixers and Fridge Bodies.
- Wide range of products and kits available to fulfil your needs.

Fixed Leg Kits

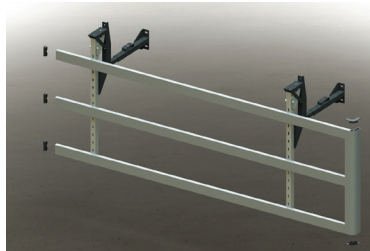
Our fixed legged kits make use of our PWL950G and TK3054 legs. These kits are commonly used with Tipper Vehicles with the leg being attached directly to the chassis of the vehicle. Lift-Up leg kits are available below.



Kit No.	Leg	Corner Pillar	Rail	Chassis Brace	Chassis Arm	Max Drop	Max Leg Spacing	Max Front Overhang	Max Rear Overhang
						mm	mm	mm	mm
7	PWL950G	SG4CP	SG4	-	-	950	2700	600	350
9	TK3054	CP53/CP54	SG5A	-	-	575	2700	600	250
10	TK3054	TK1040	TK1010	-	-	575	2700	600	250
13	TK3054	SG4CP	SG4	-	-	600	2700	635	250

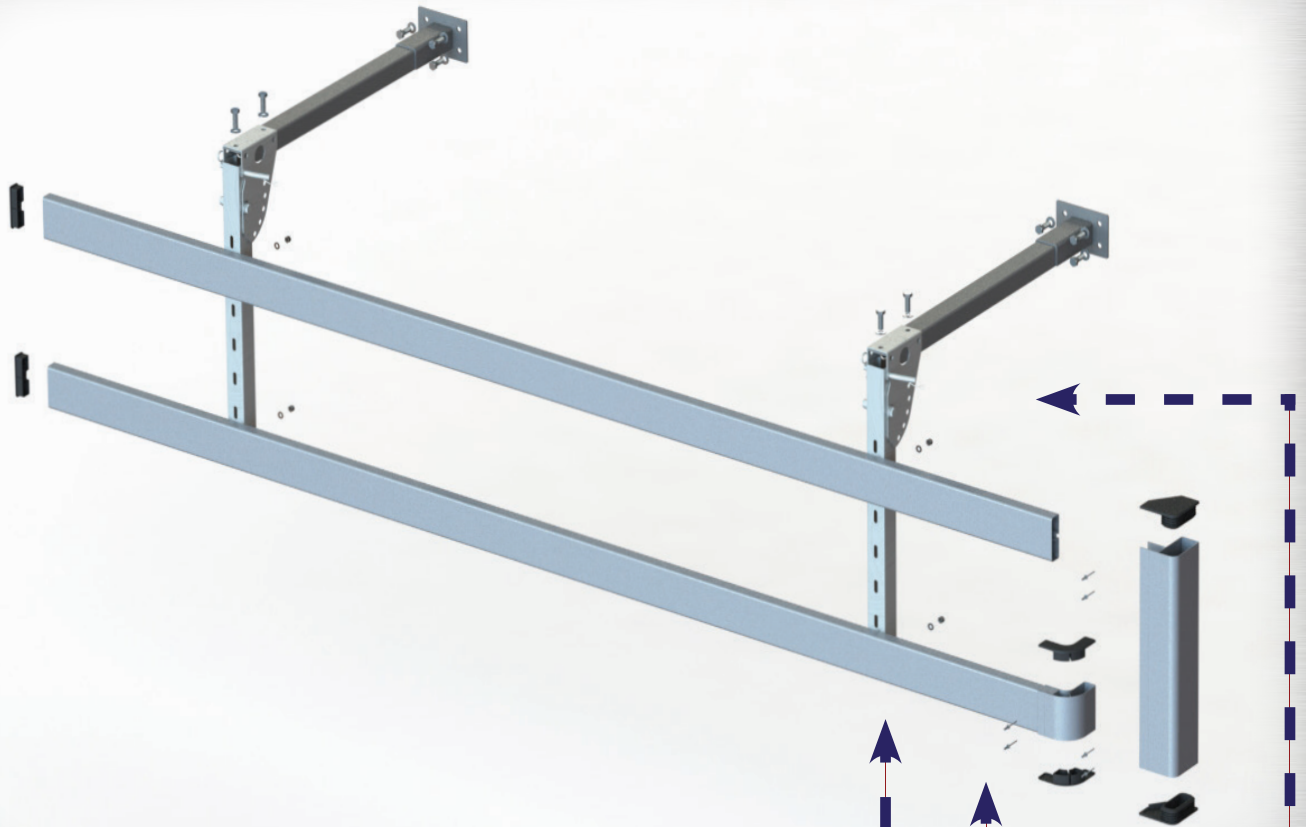
Lift - Up Leg Kits

Our range of lift-up leg kits offer users the level of safety that they expect with in a more versatile kit. The SGMK5 and TK3017 leg are designed to lift up to allow access to the underneath of the vehicle when stationary. Couple this with the SMG1 Chassis Brace and our new range of Chassis Arms, this results in some of our most versatile kits in our Side Guard Kit range. Our lift uplegs can also be made to be fixed through the application of a bolt in place of the pivot pin.



Kit No.	Leg	Corner Pillar	Rail	Chassis Brace	Chassis Arm	Max Drop	Max Leg Spacing	Max Front Overhang	Max Rear Overhang
						mm	mm	mm	mm
8	SGMK5	CP53/CP54	SG5A	SMG1	-	1260	2700	600	200
14	TK3017	CP53/CP54	SG5A	-	32408	600	2700	600	250
15	SGMK5	CP53/CP54	SG5A	-	32406	592	1700	700	250
16	SGMK5	CP53/CP54	SG5A	-	32407	700	1700	700	250

SERVICE METALS



Side Guard Leg (*SGMK5 shown*)

Side Guard Rail (*SG5A shown*)

Single Rail Corner Pillar (*CP53 100mm shown*)

Double Rail Corner Pillar (*CP54 500mm shown*)

Chassis Arm (*32406 shown*)

The Service Metals Group:

Leeds, Yorkshire

Braintree, East Anglia

Oldham, Manchester

Talke, Staffordshire

Newbury, Berkshire

Gateshead, Tyne and Wear

Glasgow, Scotland

Dublin, Ireland

Rosendale, Lancashire

WWW.SERVICEMETALS.CO.UK