



VCA Headquarters  
1 The Eastgate Office Centre  
Eastgate Road  
Bristol, BS5 6XX  
United Kingdom

Switchboard: +44 (0) 117 951 5151  
Main Fax: +44 (0) 117 952 4103  
Email: [enquiries@vca.gov.uk](mailto:enquiries@vca.gov.uk)  
Web: [www.vca.gov.uk](http://www.vca.gov.uk)

---

THE UNITED KINGDOM VEHICLE APPROVAL AUTHORITY

---

COMMUNICATION CONCERNING THE GRANTING OF EEC TYPE APPROVAL AS A COMPONENT OF MECHANICAL COUPLING DEVICES FOR MOTOR VEHICLES AND THEIR TRAILERS PURSUANT TO DIRECTIVE 94/20/EC OF 30 MAY 1994 (STU)

---

Type Approval No(1): e11\*94/20\*7776\*00

Reason(s) for Extension: Not Applicable

Section I

- 0.1 Make(trade name of manufacturer): Witter Towbars Limited
- 0.2 Type and general commercial description(s): MR45A. Mercedes Sprinter chassis cab
- 0.3 Means of identification of type if marked on the component(2): Adhesive label
- 0.3.1 Location of that marking: See Manufacturer's documentation
- 0.5 Name and address of manufacturer: Witter Towbars Limited  
Drome Road  
Deeside Industrial Park  
Deeside  
Flintshire  
CH5 2NY  
UNITED KINGDOM
- 0.7 In the case of components and separate technical units, location and method of affixing of the EEC approval mark: See Manufacturer's documentation
- 0.8 Name(s) and address(es) of assembly plants: See section 0.5

Job Number VSK210846

An executive agency of the Department for Transport  
Date January 2009 Issue 8



## Section II

1	Additional information (where applicable):	See Appendix I
2	Technical service responsible for carrying out the tests:	Vehicle Certification Agency
3	Date of test report:	21 July 2009
4	Number of test report:	VSK207452
5	Remarks (if any): See Appendix I	None
6	Place:	BRISTOL
7	Date:	25 AUGUST 2010
8	Signature:	 A. W. STENNING Head of Technical and Quality Group

9 The index to the information package lodged with the competent authority that has granted type approval, which may be obtained on request, is attached.

- (1) The EEC type approval number appearing on this document shall consist of all sections outlined in Annex VII to Directive 70/156/EEC as last amended by Directive 92/53/EEC.  
The component itself shall be marked as prescribed in the relevant separate Directive.
- (2) If the means of identification of type contains characters not relevant to describe the component types covered by this type approval certificate such characters shall be represented in the documentation by the symbol '?' (e.g. ABC??123??).





# Fitting Instructions

TOWBAR MR45A  
For Mercedes Sprinter  
With Tail Lift

## MATERIALS

A	1	Cross Bar with European facing to 94/20/EC A50-1
D	8	M12 x 110mm Bolts, Nyloc Nuts and 16 Ø40 Flat Washers
CB	2	M16 x 50mm Coupling Bolts, Nuts and Lock Washers
ZE	1	Electrical Plate (Not shown) ZEP35

**Note:** A fuel tank shield may be required – refer to vehicle handbook.

## FITTING

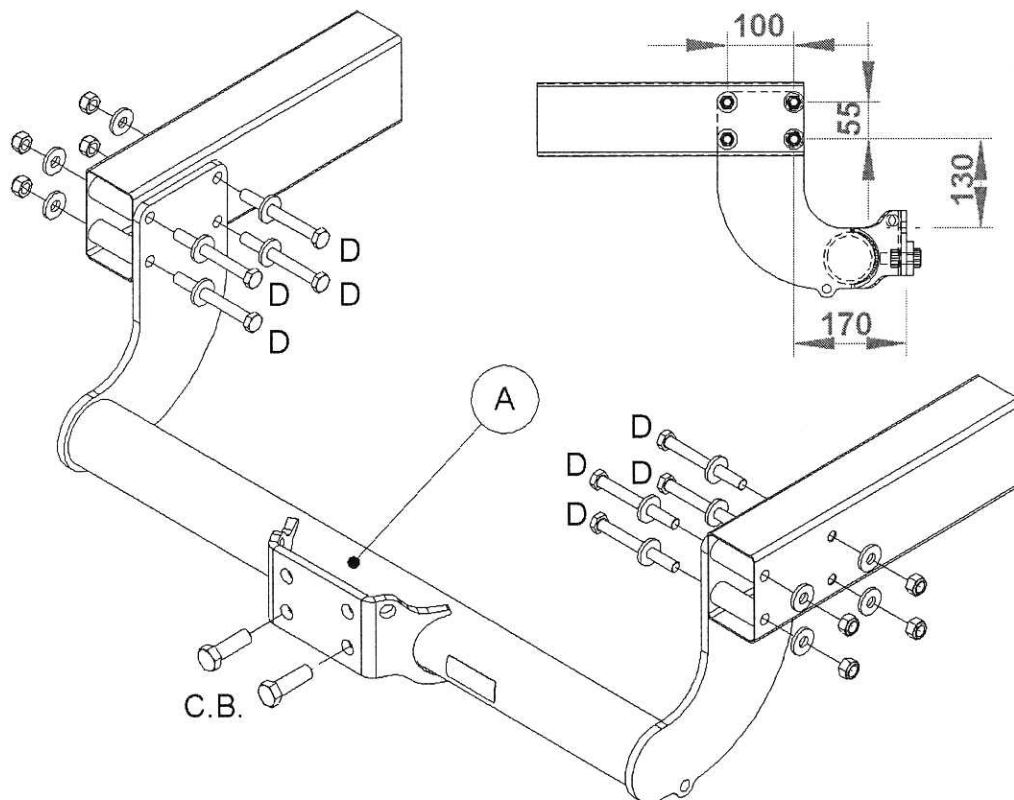
1. Remove towing eye from right hand chassis rail, loosely attach Cross bar (A) to existing bushed holes in vehicle chassis using Bolts (D) with Flat Washers fitted as shown below.
2. Fully tighten bolts to torques listed below

**Note:** This towbar must be used with a Class A50-1 or A50-X towball dimensionally conforming to A50-1 with a 'D' and 'S' value greater than or equal to that of the towbar.

Please refer to the vehicle specification for the trailer weight and nose limits, which **must be observed**.

### Recommended torque settings:

Grade 8.8 bolts: M12 – 80Nm, M16 - 214 Nm



W0001MR45A-FIT\$010807100000