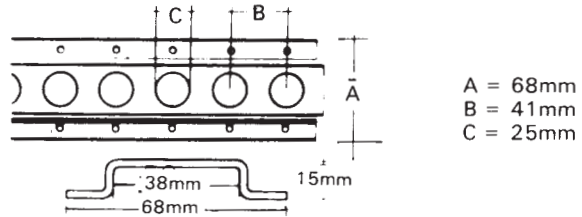


Loadlock Track Restraint Systems

Type 1805

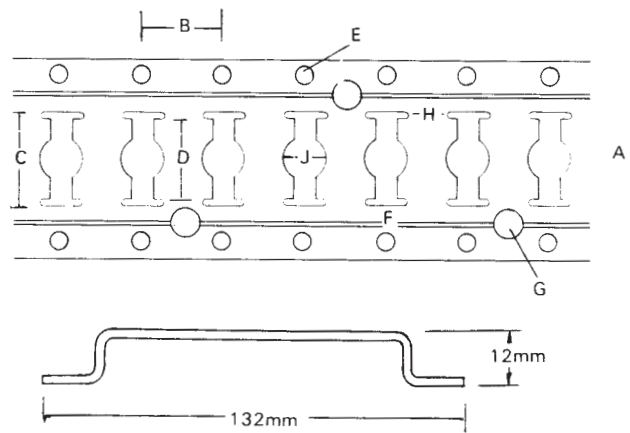
Type 1805 Standard duty 1.8mm produced from pre-galvanised mild steel. For horizontal and vertical installation. Length 3048mm. Suitable for telescopic shoring poles and webbing lashing assemblies.



Type 60025

2.5mm thick produced from zinc, passivated, yellow plated. Multi load track with universal slots and drainage holes

- A = 132mm
- B = 51mm
- C = 61mm
- D = 51mm
- E = 5mm dia.
- F = 25mm
- G = 14mm dia
- H = 13mm
- J = 25mm dia



1806

Type 1806 — Heavy duty produced from micro alloyed steel, zinc plated to ZN3. Also available in stainless steel 15mm top hat section. For horizontal and vertical installation. Length 3048mm. Suitable for telescopic shoring poles, decking beam brackets, garment rails and webbing lashing assemblies.

